



LESSON 2:
PASSWORDS

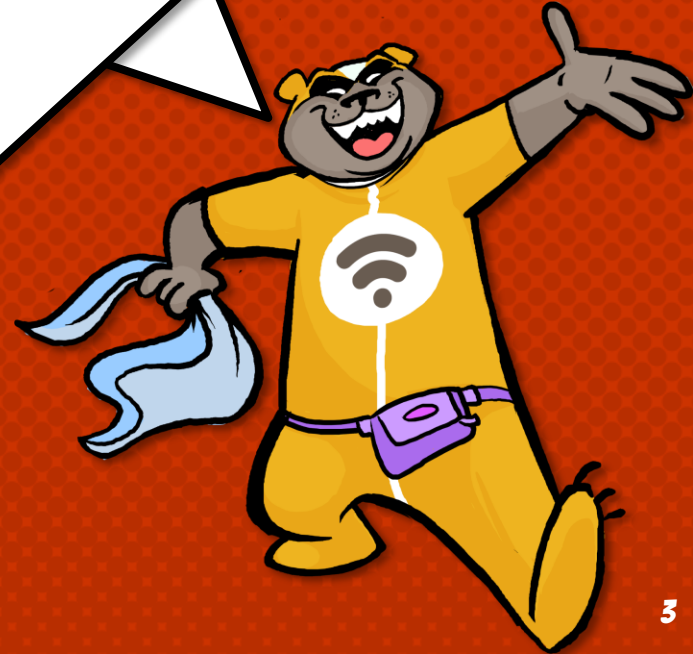
You can name her whatever you like, but be sure it's something you can remember. You'll be using it as a security question answer for the rest of your life.



© 2012
BIZARRO
9.27.12

BIZARROCOMICS.COM Facebook.com/BizarroComics Dist. by King Features

WHY DO WE NEED TO USE PASSWORDS ON WEBSITES AND OUR DEVICES?

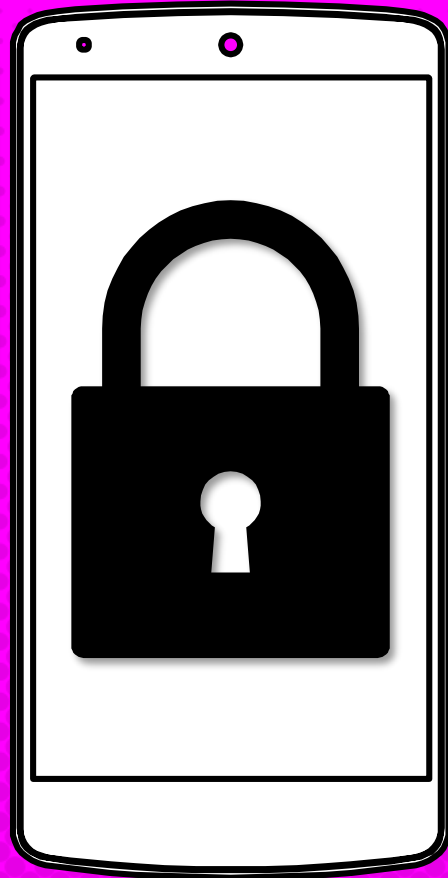




Why do we
use
passwords?

***PASSWORDS HELP
KEEP OUR
INFORMATION SAFE
AND SECURE!***

It's like a lock and key. If
you have the proper key
(or password) then you
are granted access to
what's behind the lock!



WEAK PASSWORDS

I love weak passwords!



- ✓ All lowercase or uppercase letters
- ✓ Common words (princess, dragon, pet's name)
- ✓ Not using a mixture of numbers and symbols!
- ✓ Contains less than 8 characters! **TOO SHORT!**



A weak password can be easily guessed.

STRONG PASSWORDS

Something that is not easily guessed and includes a combination of upper case and lower case letters, symbols and numbers!

HERE'S SOME GOOD PASSWORDS:

!Cy-B3ar_Rulz57\$

*IloveMy_#1Dog

CU_L8Tr_Sk8rT478



HOW TO MAKE STRONGER PASSWORDS

Step 1: Don't reuse old passwords!

Step 2: Add some uppercase or lowercase letters!

Step 3: Add random numbers! DO NOT JUST ADD 123

Step 4: Add in some of the following symbols!

% \$ # ! _ - / ? * & ^



**HOW DO
PEOPLE FIND
OUT MY
PASSWORD?**





***DIFFERENT TYPES OF
ATTACKS INCLUDE:
BRUTE FORCE ATTACK
DICTIONARY ATTACK***

BRUTE FORCE ATTACK

A brute force attack is where an attacker tries every possible combination they can think of until a combination works. This attack takes a lot of time and effort.

THINK OF HOW MUCH TIME IT WOULD TAKE TO TRY TO CALL EVERY PHONE NUMBER IN THE WORLD UNTIL YOU FINALLY REACH YOUR FRIEND NEXT DOOR, THAT'S A LONG TIME! BUT A COMPUTER CAN DO IT IN A FRACTION OF THAT TIME.



DICTIONARY ATTACK

It's like searching through a dictionary of known words until you find the correct word you're looking for!



A dictionary attack is a method of searching by common words and combinations of names.

Common combinations include:

- ✗ Capitalizing only the first letter
- ✗ Ending your password with a single digit.

MOST COMMON PASSWORDS

25 Of The Most Popular Passwords

1	123456	6	123456789	11	admin	16	starwars	21	hello
2	password	7	letmein	12	welcome	17	123123	22	freedom
3	12345678	8	1234567	13	monkey	18	dragon	23	whatever
4	qwerty	9	football	14	login	19	passw0rd	24	qazwsx
5	12345	10	iloveyou	15	abc123	20	master	25	trustno1

**OHHHHH I LIKE
THESE PASSWORD
CHOICES!**



**THESE ARE
SUPER BAD
PASSWORDS!**



PASSWORD RECAP

Strong Password Criteria:

1. Longer than 8 characters
2. Contains a mixture of upper and lower case letters
3. Contains a mixture of numbers
4. Contains a mixture of symbols !@#\$%^&* _-

BRUTE FORCE ATTACK: A METHOD OF TRYING EVERY POSSIBLE COMBINATION UNTIL A COMBINATION WORKS.

DICTIONARY ATTACK: A METHOD OF SEARCHING BY COMMON WORDS AND COMBINATIONS OF NAMES.

Stay smart online! Use complex passwords.



OTHER PASSWORD TIPS

You should always enable Two Step Verification (2SA) on all your social media and other password protected websites when available.

ALSO, YOU SHOULD LOOK INTO USING A PASSWORD MANAGER TO HELP STORE AND CREATE ULTRA-SECURE PASSWORDS ON ALL YOUR SOCIAL MEDIA AND OTHER PASSWORD PROTECTED SITES

Two Factor Authentication



+

